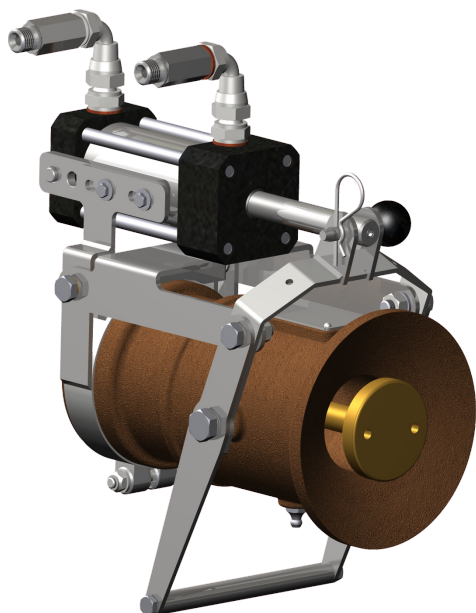


LANZA FIREX OLEODINÁMICA
HYDRAULICALLY OPERATED FIREX NOZZLE

Mod. **SE-OFX**
ed 2013



CARACTERÍSTICAS CONSTRUCTIVAS ACTUADOR

- Material cuerpo: bronce + acero inoxidable AISI 304.
- Material parte interna: acero inoxidable AISI 304.
- Material juntas: NBR.
- Presión máxima de trabajo (aconsejada): 100 bar.

OPCIONAL

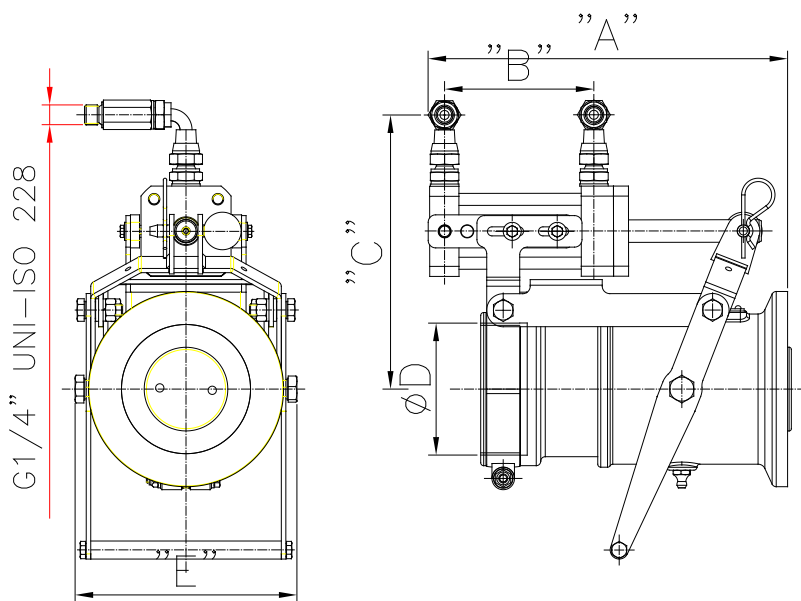
- Material alternativo del la lanza.
- Material alternativo del pistón.

ACTUATOR CONSTRUCTION FEATURES

- Body material: anodized light alloy + stainless steel AISI 304.
- Internal parts material: stainless steel AISI 304.
- Gasket material: NBR.
- Max. working pressure (advised): 100 bar.

OPTIONAL

- Different material for the nozzle.
- Different material for the actuator.



MODELO MODEL	CAUDAL FLOW RATE L/min. max @7bar.	MATERIAL LANZA NOZZLE MATERIAL	"A" (max.) mm.	"B" mm.	"C" mm.	"ØD" GAS - BSP	"E" mm.	"F" mm.	PESO WEIGHT Kg
SE-OFX-30-BZ	1000÷3000	Bronce y latón – Bronze and brass	240	100	185	2,5" / 3"	295	148	11
SE-OFX-A-30-BZ	1000÷3000	Bronce y latón– Bronze and brass	240	100	185	2,5" / 3"	295	148	11
SE-OFX-30-AL	1000÷3000	Aluminio y bronce – Light alloy & bronze	230	100	185	2,5" / 3"	295	148	6
SE-OFX-30-I	1000÷3000	Acero inox. y bronce – Stainless steel & bronze	230	100	185	2,5" / 3"	295	148	9,5
SE-OFX-50-AL	3000÷6000	Aluminio y bronce– Light alloy & bronze	260	110	190	3" / 4"	305	180	8,5
SE-OFX-50-I	3000÷6000	Acero inox. y bronce– Stainless steel & bronze	260	110	190	3" / 4"	305	180	18
SE-OFX-A-50-AL	3000÷6000	Aluminio y bronce– Light alloy & bronze	305	130	230	3" / 4"	310	190	13
SE-OFX-A-50-I	3000÷6000	Acero inox. y bronce– Stainless steel & bronze	305	130	230	3" / 4"	310	190	22