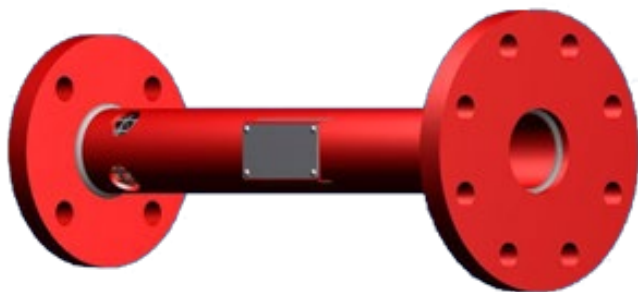


GENERATEUR DE MOUSSE FIXE

FIXED FOAMMAKER

Mod. **SE-LF**



CARACTÉRISTIQUES DE CONSTRUCTION

- Corps en acier au carbone
- Orifice calibré démontable en acier inoxydable AISI 304
- Finition: émail polyuréthane (RAL 3000)

OPTION

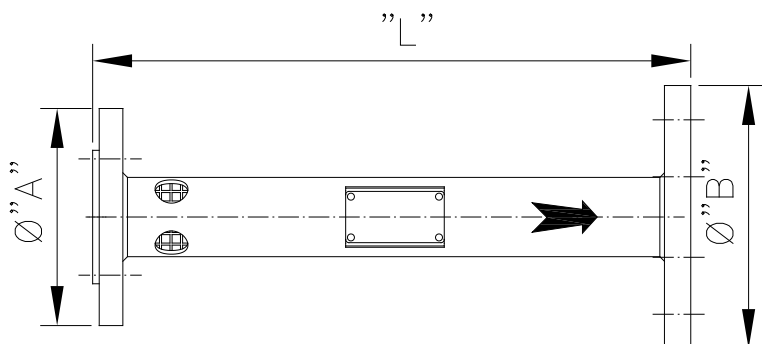
- Corps et brides en acier inoxydable (AISI 304 / AISI 316)
- Galvanisation à chaud

CONSTRUCTION FEATURES

- Body and flanges material: carbon steel
- Detachable calibrated orifice material: stainless steel AISI 304
- Finish: polyurethane enamel (RAL 3000)

OPTIONAL

- Body and flanges material: stainless steel (AISI 304 / AISI 316)
- Hot dip galvanized



MODELO MODEL	CAUDAL FLOW RATE l/min. @5bar	DISTANCIA EXPANSOR (RECOMENDADA) FOAM PUORER DISTANCE (ADVISED) mm	"ØA" mm.	"ØB" mm.	"L" mm.	PESO WEIGHT Kg. DIN (ANSI)
SE-LF-1	100	200	1"1/2	2"1/2	355	6,9 (6,6)
SE-LF-2	200	250	2"	3"	455	9,2 (8,8)
SE-LF-4	400	300	2"	4"	455	10,7 (10,8)
SE-LF-6	600	460	3"	6"	655	19,7 (19,9)
SE-LF-8	800	460	3"	6"	655	19,7 (19,9)
SE-LF-10	1000	610	4"	8"	855	30,2 (34,5)
SE-LF-12	1200	610	4"	8"	855	30,2 (34,5)
SE-LF-15	1500	610	4"	8"	855	30,2 (34,5)
SE-LF-20	2000	770	5"	10"	1055	44,5 (48,5)
SE-LF-25	2500	770	5"	10"	1055	44,5 (48,5)
SE-LF-30	3000	950	6"	12"	1255	62,4 (70,2)
SE-LF-35	3500	950	6"	12"	1255	62,4 (70,2)

Foisonnement: 1 : 5 a 5 bar
(Selon le type d'émulseur.)
Plage de pression recommandée : 3 à 7 bars.

Expansion ratio: 1:5 at 5 bar
Depending on foam concentrate type.
Recommended Pressure Range: 3 to 7 bar.